

Compact, Complete & Connected

Our C-series offers a comprehensive power distribution solution complete with our award-winning web-based monitoring technology. The compact yet highly capable C12 and C24 are true workhorses capable of powering big loads under the most difficult circumstances.

Available in a 12-output and 24-output versions with 16A continuous load capacity, full load monitoring and with a variety of output connectors, the C-series meets even the toughest demands. To complement them, the C-quad is a master distribution unit that, together with the C12 and C24, enables larger system to be easily assembled. The C-quad is available with either 400A Powerlock or CEE125 input.

Like all StageSmarts products, the C-series is fully certified and legal to use in all countries with a 230/400V 5-wire electrical system. That's pretty much all of Europe, the Middle East, Africa and most of Asia. One system covers it all.



C12



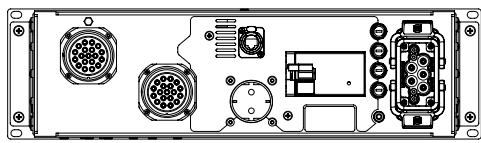
The C12 is the ideal choice for smaller but still highly demanding applications. Theatre productions, TV-studios and corporate presentation suites for example.

The high capacity RCBOs per output enables a single C12 to power a substantial number of loads. The use of Hydraulic-Magnetic circuit protection ensures that nuisance tripping due to background earth leakage or start-up currents is minimized. For example, the C12 can easily manage up to 16 LED panels per output.

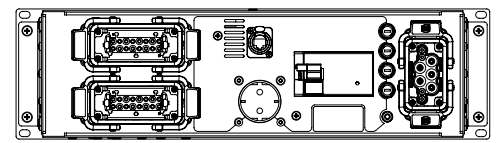
Like all StageSmarts power distribution units, the C12 features our unique 'loss of neutral' protection that cuts the power should dangerous overvoltages risk damaging the connected equipment. The C12 is fitted with a comprehensive metering system that enables checking of incoming power before switching on. The C12 is also fitted with a protected E-stop as this is requirement in certain countries.

C12 features:

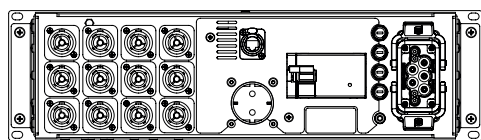
- 12 outputs each rated for continuous 16A load.
- RCBO (A-type, 30mA) on each output.
- High in-rush current capability.
- High tolerance against earth-leakage currents.
- Loss of neutral protection.
- Per output load monitoring with local LED indication.
- Integrated webserver for remote supervision
- Multifunctional metering of incoming power.
- Selection of output connector types.
- Output 12 duplicated on separate socket.
- Earth bond connection.
- Removable power-cable with CEE-plug.
- Emergency stop.
- Rack mount: 19" x 3he (133mm).
- Depth: 329mm.
- Weight:16kg.
- Full compliance to applicable EN norms.
- CE-certified.



C12B - 1x 2x19-pin Socapex, 6 ch/connector

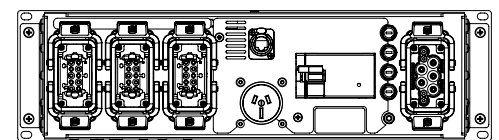


C12B - 2x 2x16-pin Harting, 6 ch/connector

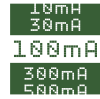


C12B - 5x 12 x Neutrik True1

x = Type of connector for output 24:
1 = German Schuko, 2 = French Schuko, 3 = UK
13A, v4 = Australian GPO, 5 = Swiss



C12B - 7x 3x10-pin Harting, 4 ch/connector



C24



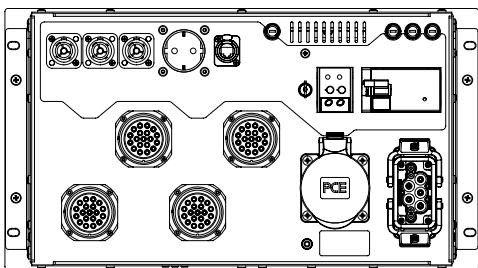
The C24 sets a new standard for power distribution functionality. Its 24 outputs plus a separate 32A 3-phase outlet makes it an ideal building block for larger systems. The high capacity RCBOs per output and enables a single C24 to power a substantial number of loads. The use of Hydraulic-Magnetic circuit protection ensures that nuisance tripping due to background earth leakage or start-up currents is minimized. For example, the C24 can easily manage up to 16 LED panels per output.

The C24 also features a 32A 3-phase outlet with adjustable and switchable earth leakage protection. Perfect for powering an additional smaller power distributor (like our C12).

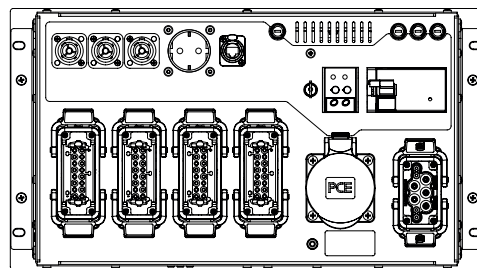
Like all StageSmarts power distribution units, the C24 features our unique 'loss of neutral' protection that cuts the power should dangerous overvoltages risk damaging the connected equipment. The C24 is fitted with a comprehensive metering system that enables checking of incoming power before switching on. The C24 is also fitted with a protected E-stop as this is requirement in certain countries.

C24 features:

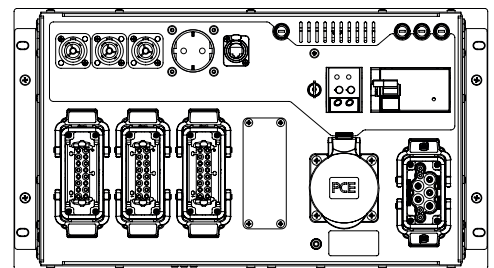
- 24 outputs each rated for continuous 16A load.
- RCBO (A-type, 30mA) on each output.
- High in-rush current capability.
- High tolerance against earth-leakage currents.
- Loss of neutral protection.
- Per output load monitoring with local LED indication.
- Integrated web-server for remote supervision
- Multifunctional metering of incoming power.
- 32A 3-phase outlet with adjustable RCD.
- Selection of output connector types.
- Output 21-23 duplicated on TRUE1 connectors.
- Output 24 duplicated on separate socket.
- Earth bond connection.
- Removable power-cable with CEE-plug.
- Emergency stop.
- Rack mount: 19" x 6he (266mm).
- Depth: 329mm.
- Weight: 21kg.
- Full compliance to applicable EN norms.
- CE-certified.



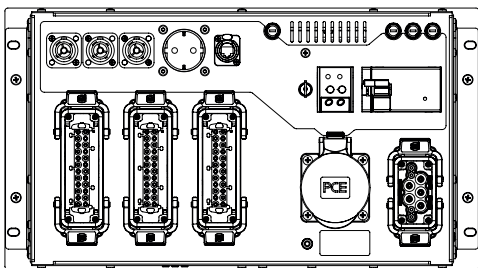
C24B - 1x 4x19-pin Socapex, 6 ch/connector



C24B - 2x 4x16-pin Harting, 6 ch/connector

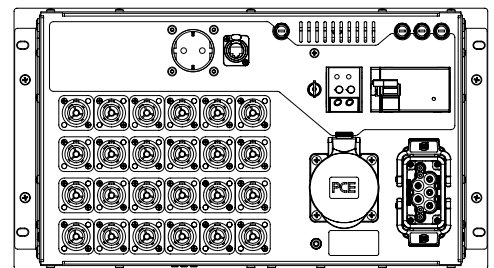


C24B - 3x 3x16-pin Harting, 8 ch/connector



C24B - 4x 3x24-pin Harting, 8 ch/connector

x = Type of connector for output 24:
 1 = German Schuko, 2 = French Schuko, 3 = UK 13A, 4 = Australian GPO, 5 = Swiss



C24B - 5x 24 x Neutrik True1

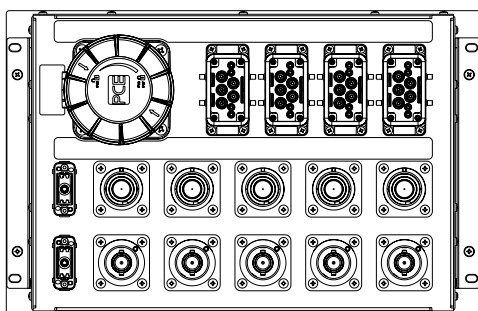


The C-quad Master Distribution Unit complements the C-series by enabling multiple C-12's or C-24's to be combined to create systems up to 96 outputs big. This makes the C-series power distribution units the perfect choice for users requiring a flexible system that can be assembled into large systems but also broken down into smaller components and distributed over many simultaneous jobs and venues.

Three StageSmarts C24 units and one C-quad takes up just 25 units of rack-space and fits easily in a 1200mm high flight-case presenting users with a very capable system in a very compact size.

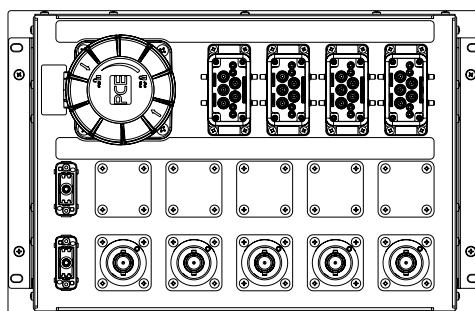
C-quad features:

- 400A Powerlock input connectors.
- Full 400A feed-through on Powerlock outputs (if fitted).
- Optional CEE 125A 3-phase input.
- Phase indicators.
- 250A MCCB with adjustable trip characteristics for protection and disconnection.
- Hydraulic-Magnetic 3p+N circuit breakers.
- Harting 63A output connections.
- CEE 63A duplicated on output 4 for connections of non C-series equipment.
- Dual Harting earth bond connections.
- 19" x 7he (311mm).
- Depth: 411mm.
- Weight: 26 kg.



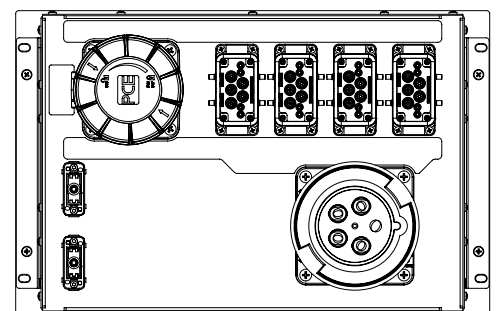
C-QUAD-63-1

Powerlock 400A In & through



C-QUAD-63-2

Powerlock 400A in



C-QUAD-63-3

CEE 125A in